

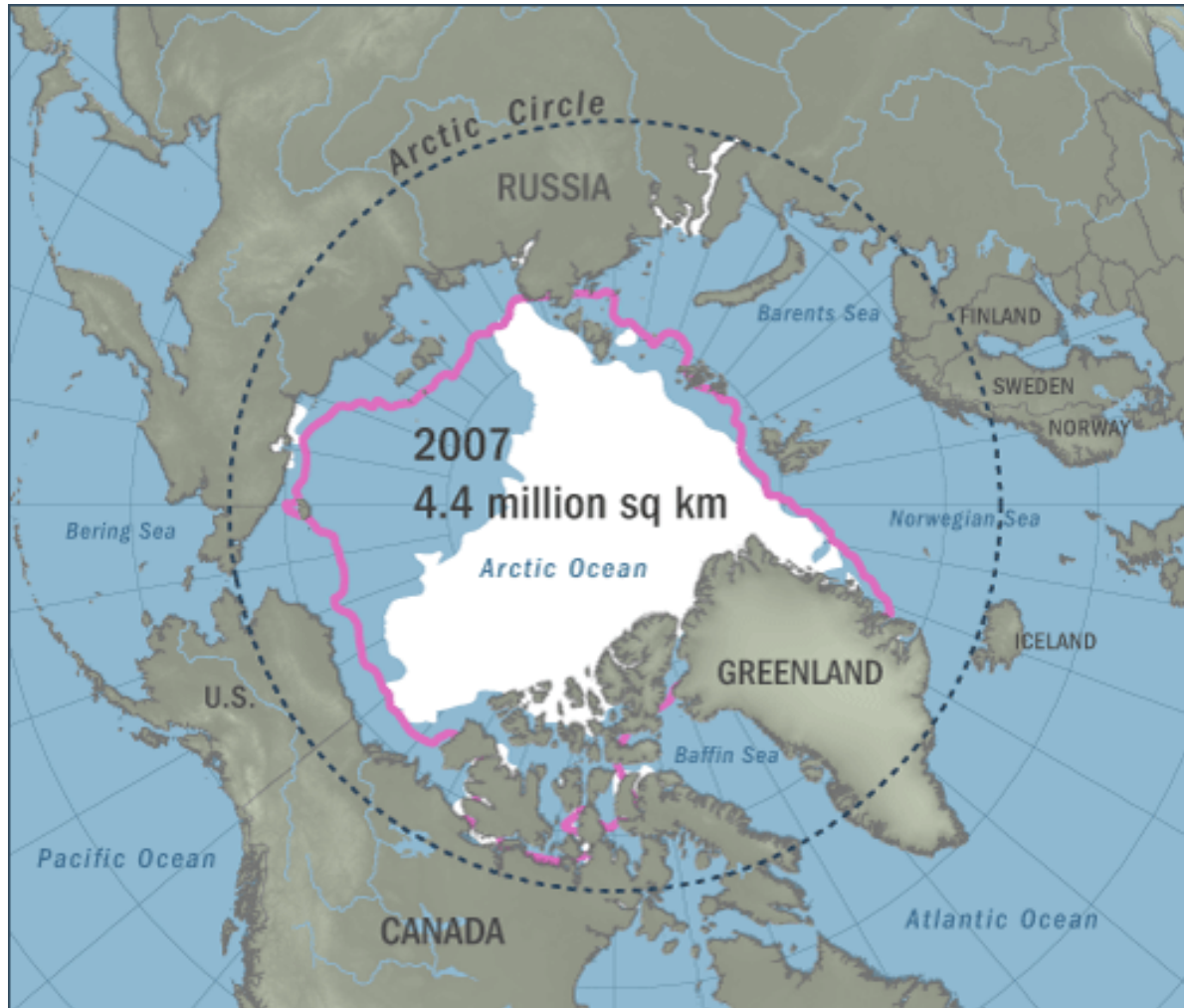


Northern Dimension Partnership for Transport and Logistics

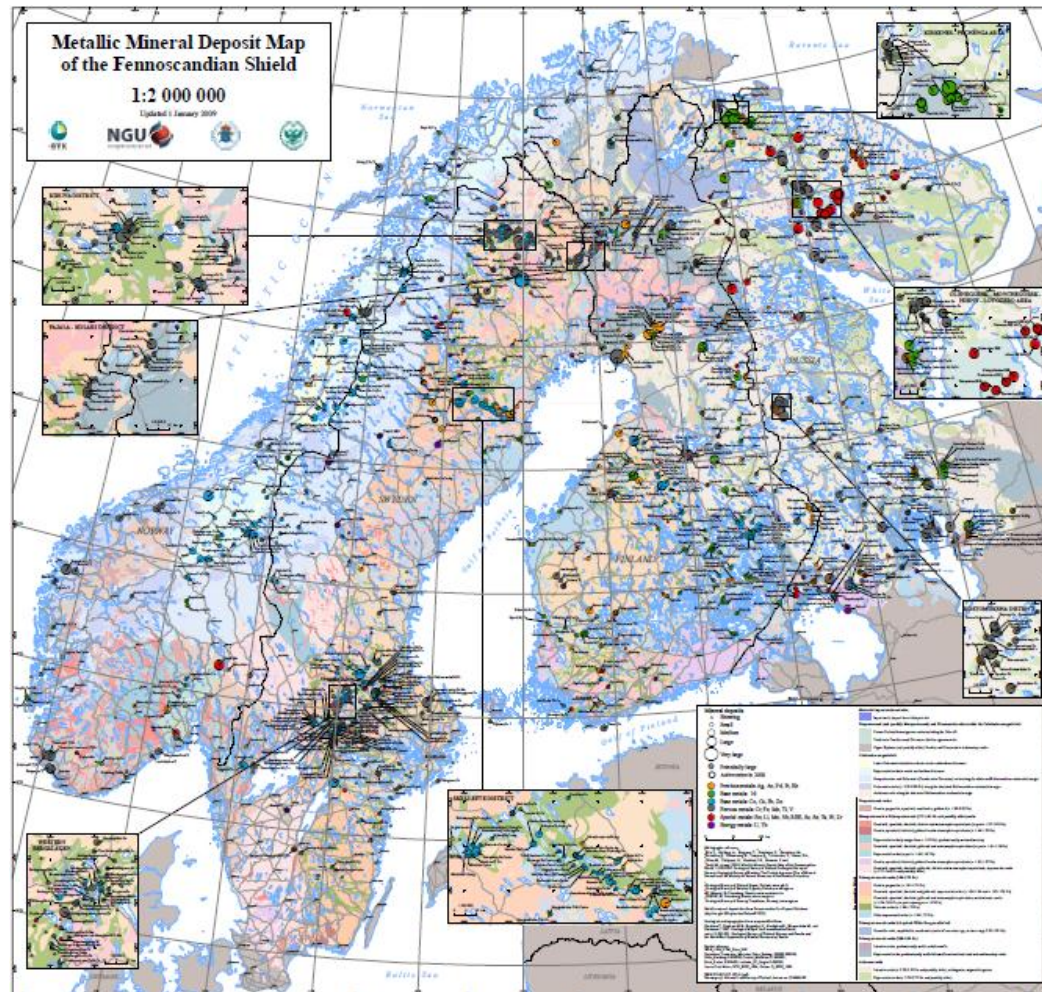
# Northern Dimension Partnership on Transport and Logistics

Oddgeir Danielsen

# The Arctic



# Raw materials

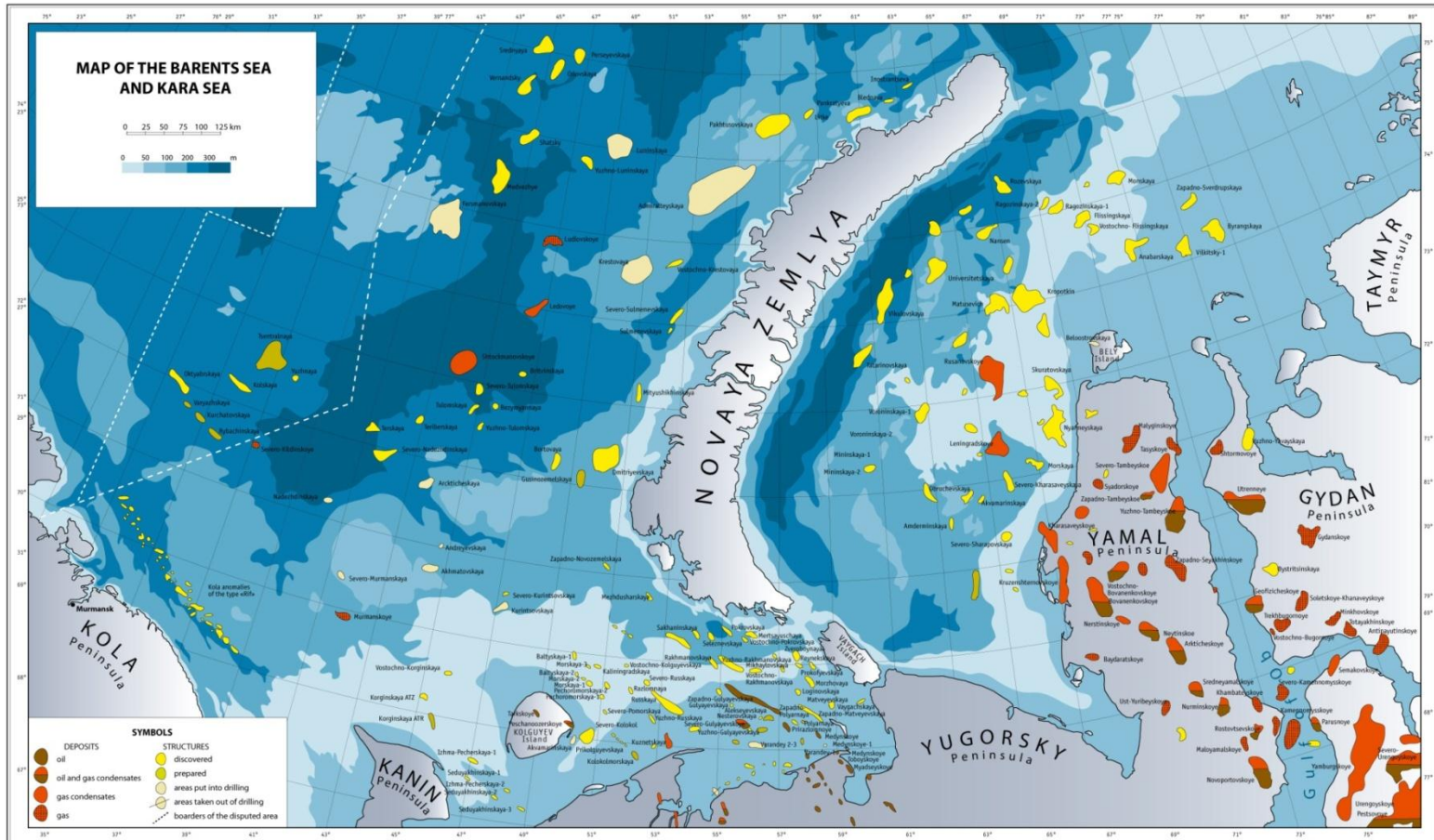


# Some railroad initiatives in the north

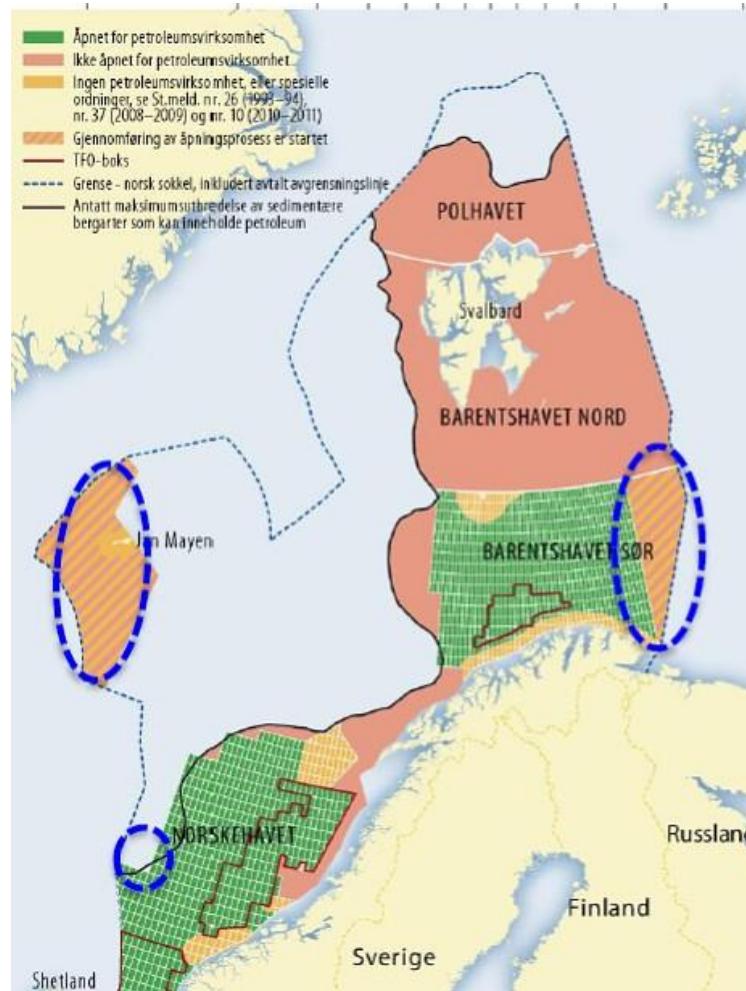




# Energy

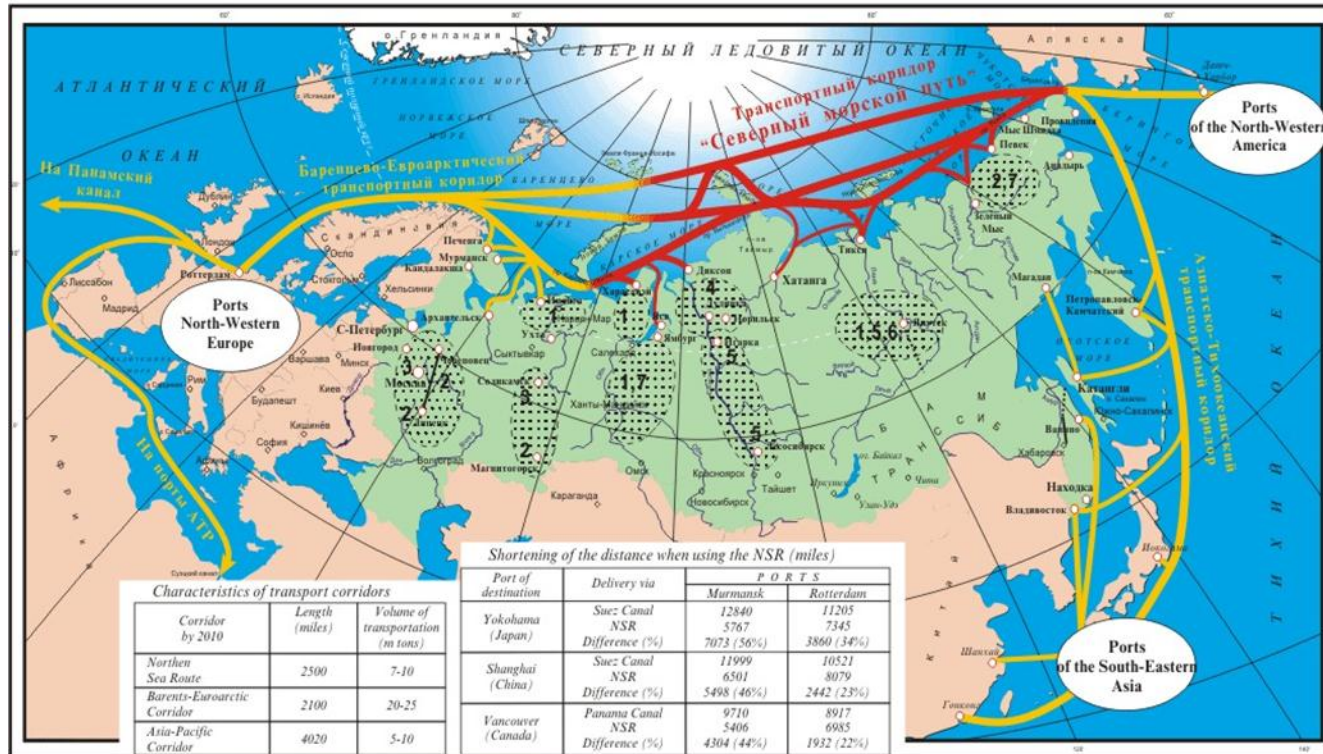


# Northern Norwegian Prospects



# The Northern Sea Route

## RUSSIAN TRANSPORT CORRIDOR "NORTHERN SEA ROUTE" within the system of international transport corridors West-East-West



### Symbols:

- Sea transport corridor
- Railways.
- ..... Railways to be constructed.

Export: 1 - hydrocarbons, 2 - metals, 3 - mineral fertilizers, 4 - products of the Norilsk Mining and Metallurgical Integrated Works, 5 - timber, 6 - coal.  
Import: 7 - products (goods).

- ..... River shipping lines.
- ..... Area of the formation of cargo
- Sources for the Northern Sea Route.





# Arctic Shipping Challenges





# Where are the challenges?

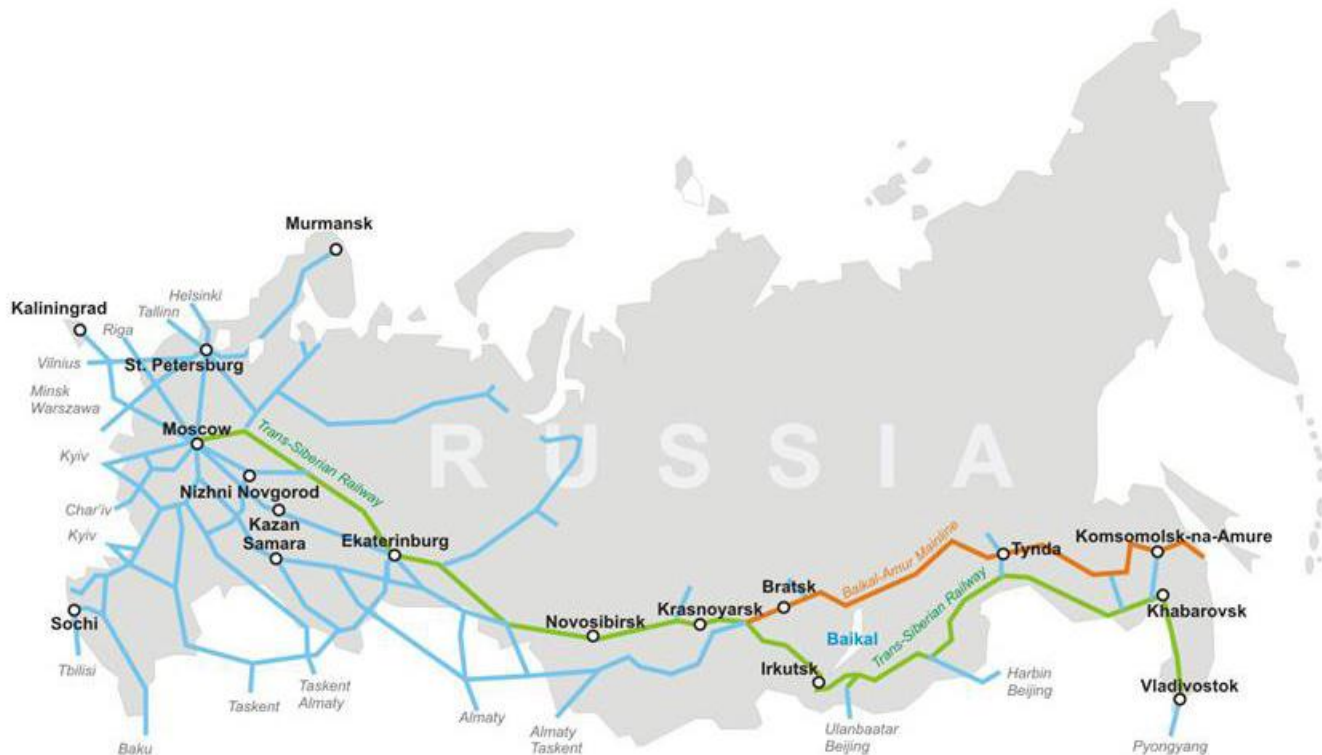
---



# Connecting the NSR with TEN-T?



# The Trans Siberian Railroad



**11 time zones**

**85,500 km of track**

**More than 1 million employees**



# Other Game Changers

---

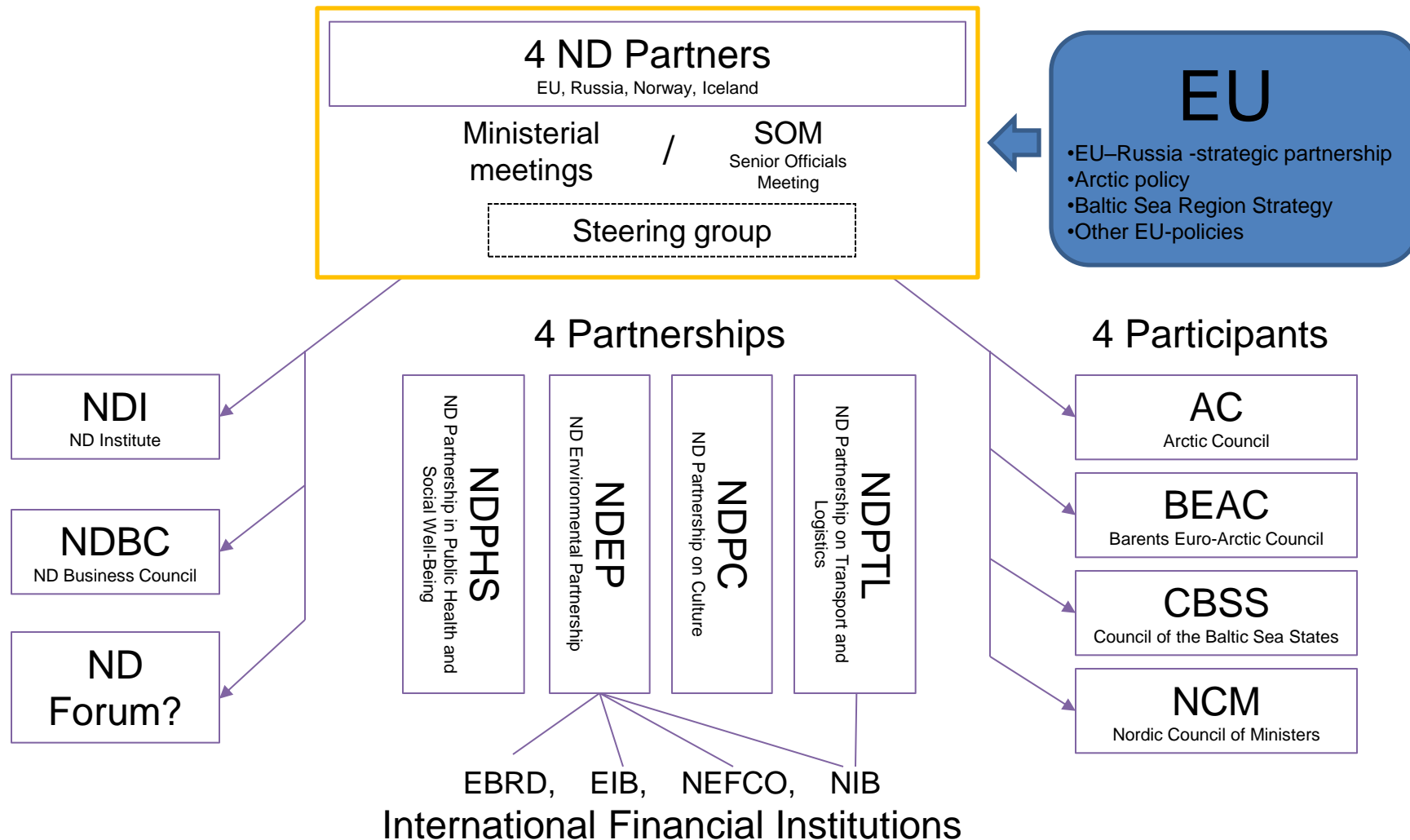


# The Northern Dimension Structure

Non-governmental level

Governmental Level

Participants



## NDPTL Partners

As suggested by the geographical scope of ND the Partnership is composed of:

- The northern EU member states: SE, FIN, EE, LV, LT, PL, DE, DK;
- Non EU countries: NO, RU, BY;
- European Commission



# Objectives of the Partnership

---

- To improve the **major transport connections** between the ND Partners;
- Accelerate the implementation of **transport and logistics infrastructure** projects;
- Accelerate the **removal of non-infrastructure related bottlenecks**;
- Set up effective structure to **monitor the implementation** of projects and measures

# Objectives of the Partnership

---

- To **improve** the major transport connections between the ND Partners;
- **Accelerate** the implementation of transport and logistics infrastructure projects;
- **Accelerate** the removal of non-infrastructure related bottlenecks;
- Set up **effective structure** to monitor the implementation of projects and measures

# NDPTL Support Fund

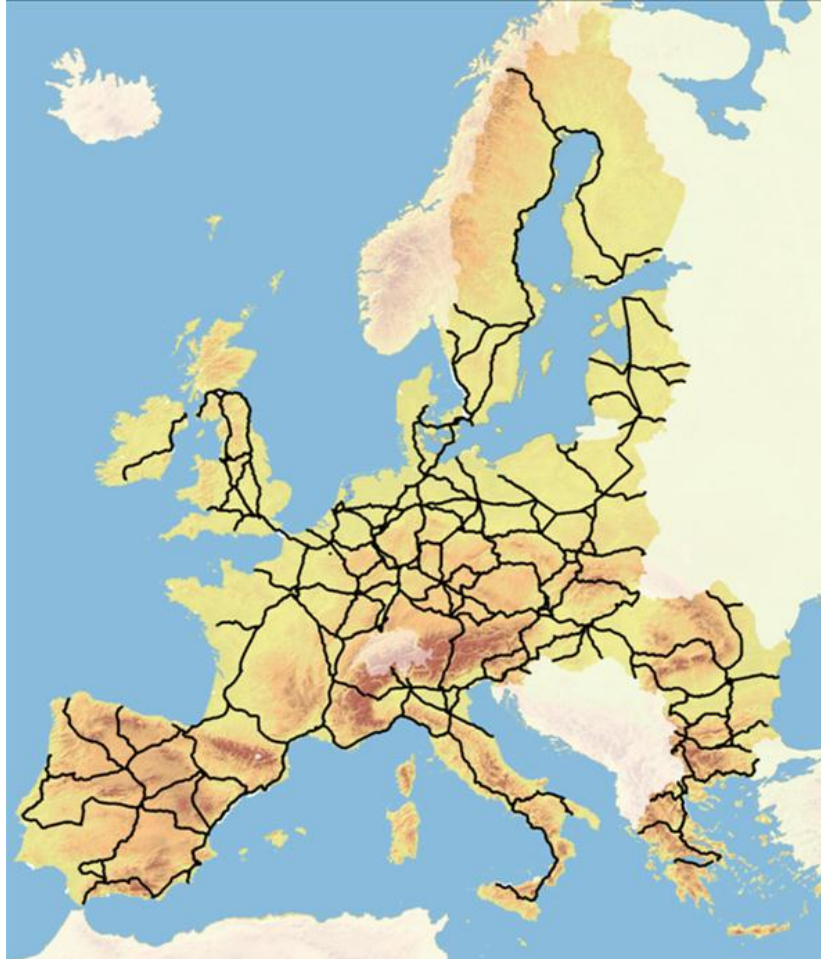
---

- NDPTL Support Fund to be used for bridging projects with the National and International Financial Institutions.
- Facilitate Financing of projects by making them "**bankable**" or "**financeable**".
- Support given as **grants** to studies covering **up to 50%** of the costs
- Possible project co-financing also for infrastructure.
- Typical studies that could be supported:
  - Feasibility studies
  - Technical Studies
  - Economic and Financial Analysis
  - Environmental Impact Assessments
  - Institutional and legal aspects



# Suggested Ten-T Core network

---



# NDPTL Regional Network



# NDPTL Regional Network



