



European Union  
European Regional Development Fund  
European Social Fund

# How to promote NSPA in a national setting?

**Mr. Jussi Yli-lahti**  
**Director of Regional Development**

**Ministry of Employment and the Economy**  
**Regional Department**



TYÖ- JA ELINKEINOMINISTERIÖ  
ARBETS- OCH NÄRINGSMINISTERIET  
MINISTRY OF EMPLOYMENT AND THE ECONOMY

# NORTHERN SPARSELY POPULATED AREAS

## Population density



# Most sparsely populated regions (EU)

EUROSTAT 2007	inhab./ km <sup>2</sup>	inhab/1000 inhab.
EU-NUTS2	2007	2007
Iceland	3,0	313,0
Övre Norrland (SE)	3,3	508,8
Pohjois-Suomi (FI)	4,8	637,5
Mellersta Norrland (SE)	5,2	370,7
Itä- & Pohjois-Suomi (FI)	6,4	1 295,0
Itä-Suomi (FI)	9,4	659,1
Highlands and Islands (UK)	11,2	443,6
Norra Mellansverige (SE)	12,9	824,9
Åland (FI)	17,4	27,0
Länsi-Suomi (FI)	23	1 341,8
Castilla-la Mancha (ES)	24,1	1 953,8
Småland med öarna (SE)	24,1	803,8
Alentejo (PT)	24,2	762,6
Extremadura (ES)	25,8	1 076,7
Castilla y León (ES)	26,3	2 494,0
Aragón (ES)	26,6	1 286,7
Estonia	30,9	1 341,7
Dytiki Makedonia (GR)	31,7	293,7
Corse (FR)	34,7	301,1



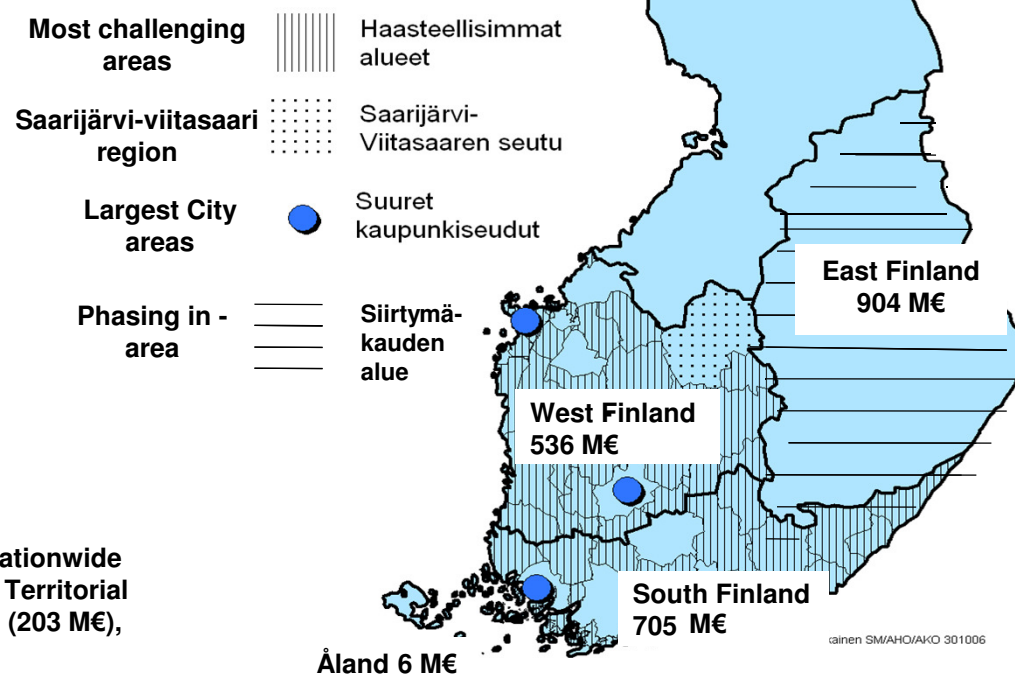
## Europe 2020: 7 flagship initiatives underpin the targets

Smart Growth	Sustainable Growth	Inclusive Growth
<b>Innovation</b> <i>« Innovation Union »</i>	<b>Climate, energy and mobility</b> <i>« Resource efficient Europe »</i>	<b>Employment and skills</b> <i>« An agenda for new skills and jobs »</i>
<b>Education</b> <i>« Youth on the move »</i>	<b>Competitiveness</b> <i>« An industrial policy for the globalisation era »</i>	<b>Fighting poverty</b> <i>« European platform against poverty »</i>
<b>Digital society</b> <i>« A digital agenda for Europe »</i>		



# Structural fund financing 2007-2013

**Estimated total public financing 3 726 M €**  
(inc. EU, state, municipal, other public) \*



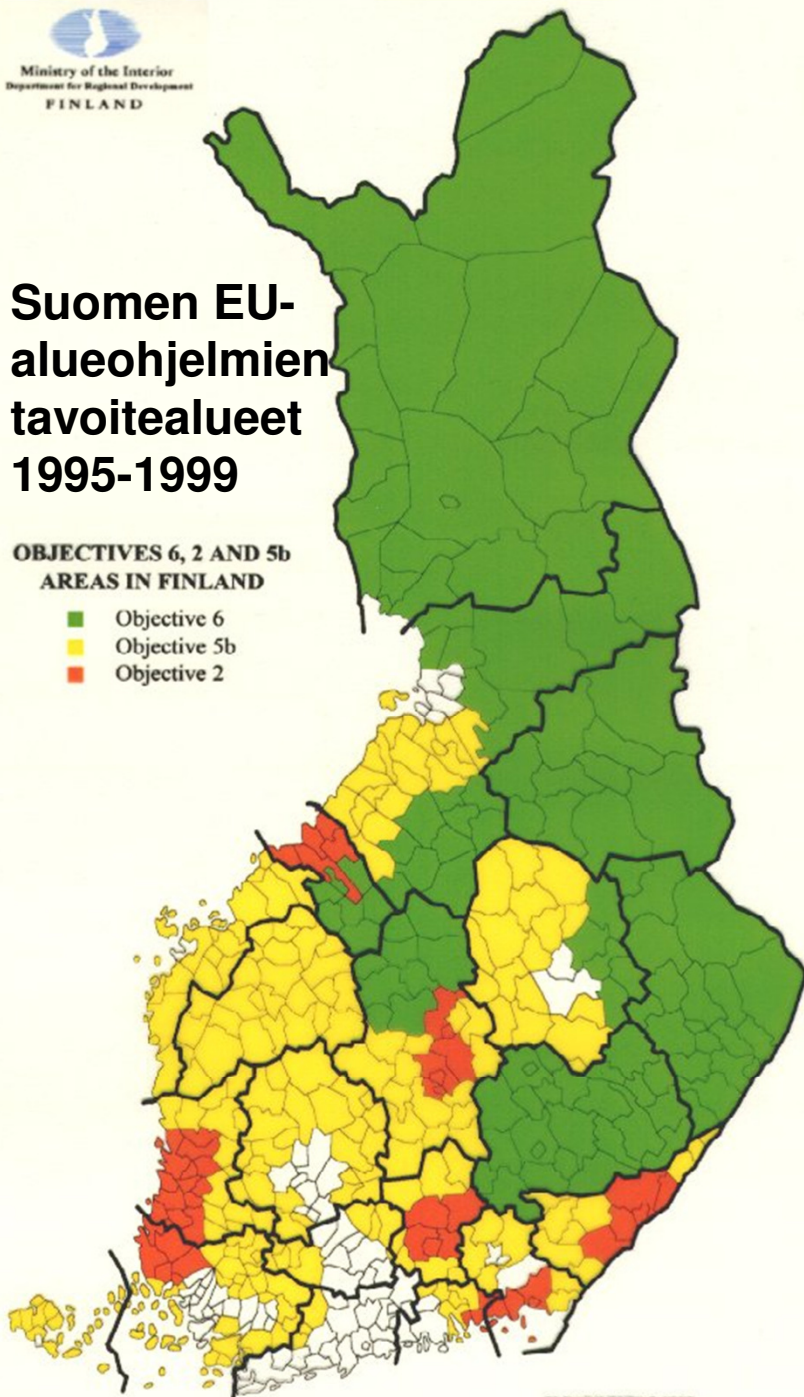
\*) including also ESF nationwide section (545 M€) and E Territorial Co-operation and ENPI (203 M€), Åland ESF (6 M€)



## Suomen EU- alueohjelmien tavoitealueet 1995-1999

### OBJECTIVES 6, 2 AND 5b AREAS IN FINLAND

- Objective 6
- Objective 5b
- Objective 2



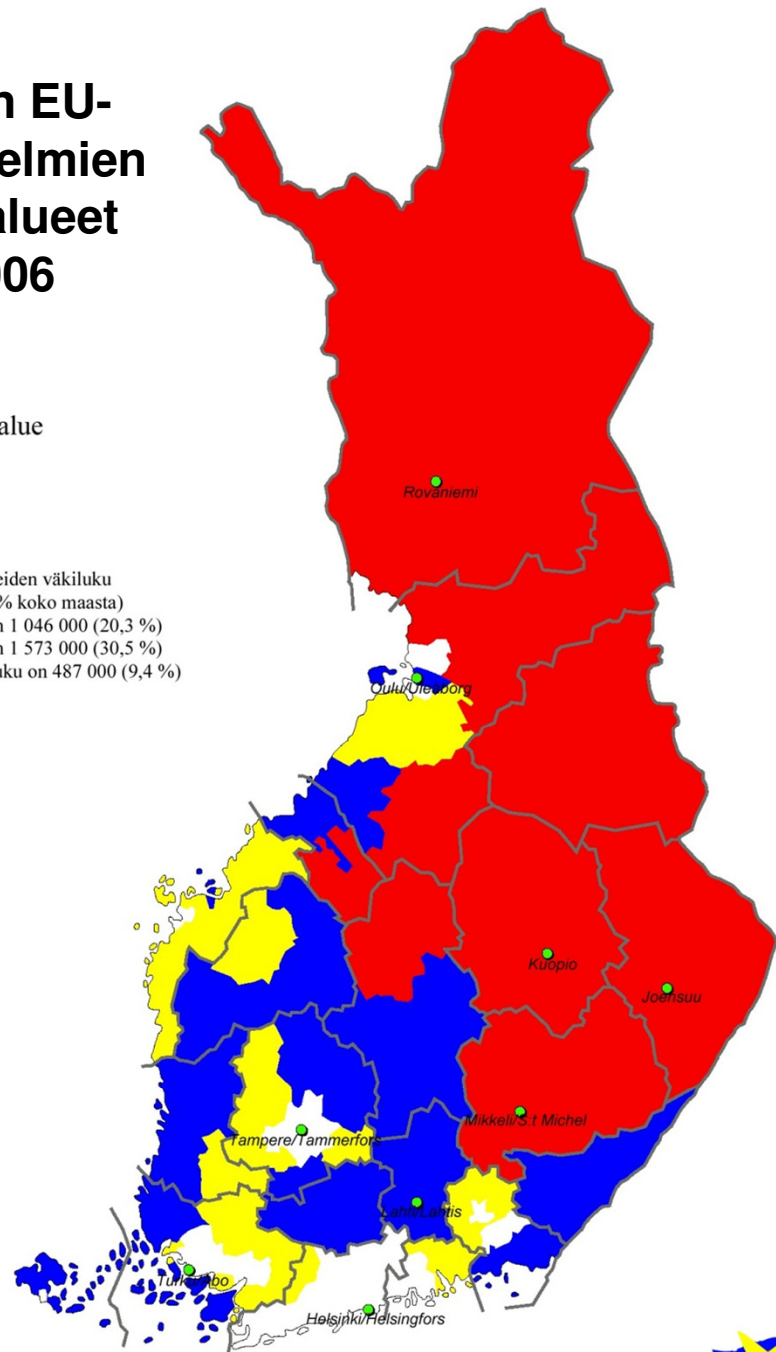
SM/AO/MH/20.2.1997

## Suomen EU- alueohjelmien tavoitealueet 2000-2006

- Tavoite 1 -alue
- Tavoite 2 -alue
- Siirtymäkauden alue

— Maakuntaraja

EU-alueohjelmien tavoitealueiden väkiluku  
on yhteensä 3 106 000 (60,2 % koko maasta)  
Tavoite 1 -alueen väkiluku on 1 046 000 (20,3 %)  
Tavoite 2 -alueen väkiluku on 1 573 000 (30,5 %)  
Siirtymäkauden alueen väkiluku on 487 000 (9,4 %)



SM/AO/MH/24.3.2000

## REGULATIONS

## COMMISSION REGULATION (EU) No 31/2011

of 17 January 2011

amending annexes to Regulation (EC) No 1059/2003 of the European Parliament and of the Council  
on the establishment of a common classification of territorial units for statistics (NUTS)

THE EUROPEAN COMMISSION,

Having regard to the Treaty on the Functioning of the European Union,

Having regard to Regulation (EC) No 1059/2003 of the European Parliament and of the Council of 26 May 2003 on the establishment of a common classification of territorial units for statistics (NUTS) <sup>(1)</sup>, and in particular Article 5(4) thereof,

Whereas:

- (1) Regulation (EC) No 1059/2003 constitutes the legal framework for the regional classification in order to enable the collection, compilation and dissemination of harmonised regional statistics in the Union.
- (2) The Annexes to Regulation (EC) No 1059/2003 list the territorial units to be used for statistics.
- (3) In accordance with the provisions in Article 5(4) of Regulation (EC) No 1059/2003, amendments to the NUTS classification should be adopted in the second half of the calendar year not more frequently than every three years.

(4) According to the information provided to the Commission, the administrative territorial division has changed in several Member States.

(5) Regulation (EC) No 1059/2003 should therefore be amended accordingly.

(6) The measures provided for in this Regulation are in accordance with the opinion of the European Statistical System Committee.

HAS ADOPTED THIS REGULATION:

## Article 1

The Annexes to Regulation (EC) No 1059/2003 are replaced by the text in the Annex to this Regulation.

## Article 2

This Regulation shall apply, with regard to the transmission of data to the Commission (Eurostat), from 1 January 2012.

## Article 3

This Regulation shall enter into force on the 20th day following its publication in the *Official Journal of the European Union*.

This Regulation shall be binding in its entirety and directly applicable in all Member States.

Done at Brussels, 17 January 2011.

For the Commission  
The President  
José Manuel BARROSO

<sup>(1)</sup> OJ L 154, 21.6.2003, p. 1



FI1D Pohjois- ja Itä-Suomi

FI1D1

Etelä-Savo

FI1D2

Pohjois-Savo

FI1D3

Pohjois-Karjala

FI1D4

Kainuu

FI1D5

Keski-Pohjanmaa

FI1D6

Pohjois-Pohjanmaa

FI1D7

Lappi



## Nykyinen NUTS 2 -jako

**Länsi-Suomi**  
Väkiluku: 1 349 600  
Asukasta/km<sup>2</sup>: 23,2  
BKT/asukas (EU=100): 103

**Pohjois-Suomi**  
Väkiluku: 641 136  
Asukasta/km<sup>2</sup>: 4,82  
BKT/asukas (EU=100): 100,7

**Itä-Suomi**  
Väkiluku: 654 344  
Asukasta/km<sup>2</sup>: 9,3  
BKT/asukas (EU=100): 88,7

**Etelä-Suomi**  
Väkiluku: 2 653 778  
Asukasta/km<sup>2</sup>: 65  
BKT/asukas (EU=100): 132,5

## Ehdotettu NUTS 2 -jako

**Länsi-Suomi**  
Väkiluku: 1 349 600  
Asukasta/km<sup>2</sup>: 23,2  
BKT/asukas (EU=100): 103

**Itä- ja Pohjois-Suomi**  
Väkiluku: 1 295 480  
Asukasta/km<sup>2</sup>: 6,4  
BKT/asukas (EU=100): 94

**Muu Etelä-Suomi**  
Väkiluku: 1 152 267  
Asukasta/km<sup>2</sup>: 36,3  
BKT/asukas (EU=100): 104

**Uusimaa**  
Väkiluku: 1 501 511  
Asukasta/km<sup>2</sup>: 164,4  
BKT/asukas (EU=100): 151

# The way forward

- Negotiations and decisions on the next Multiannual Financial Framework of the EU
- Structures for the reformed Cohesion policy
- Main programmes (ERDF, ESF, Rural Fund), European Territorial Cooperation, European Neighbourhood Policy
- New "Connecting Europe" infrastructure fund
- Updating of the Baltic Sea Region Strategy

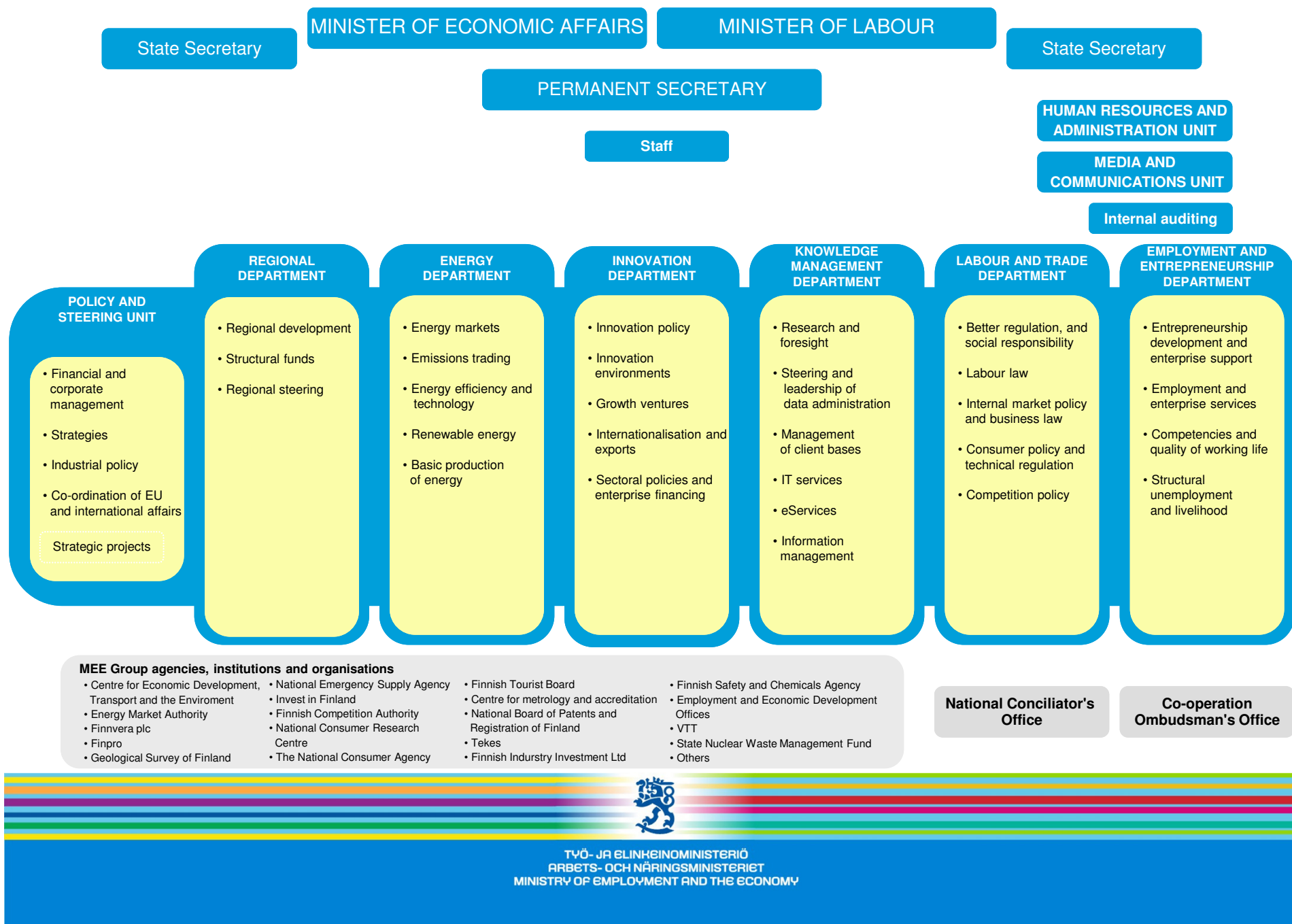


# Preliminary conclusions

- Continuation of the special financing for the Northern Sparsely Populated Areas (Treaty Art 174, Accession Treaties)
- No separate thematic or programme structures needed – full alignment to the Europe 2020 Strategy
- Strengthening cross border cooperation over internal and external borders
- Reform of EU-Russia Cooperation in the Barents Region and Baltic Sea Region – "New ENPI"
- "Revitalising" the EU Baltic Sea Region Strategy
- Strengthening Northern Dimension of the BSRS – separate Arctic strategy not needed?



# Ministry of Employment and the Economy: Organisation 1.9.2011



# REGIONAL DEVELOPMENT IN FINLAND

STATE LEVEL (MINISTRIES)

The Ministry of Employment and the Economy Coordinates

Top-down

15 Centres for Economic  
Development, Transport and  
the Environment (state  
regional development)

18 Regional Councils  
formed by municipalities

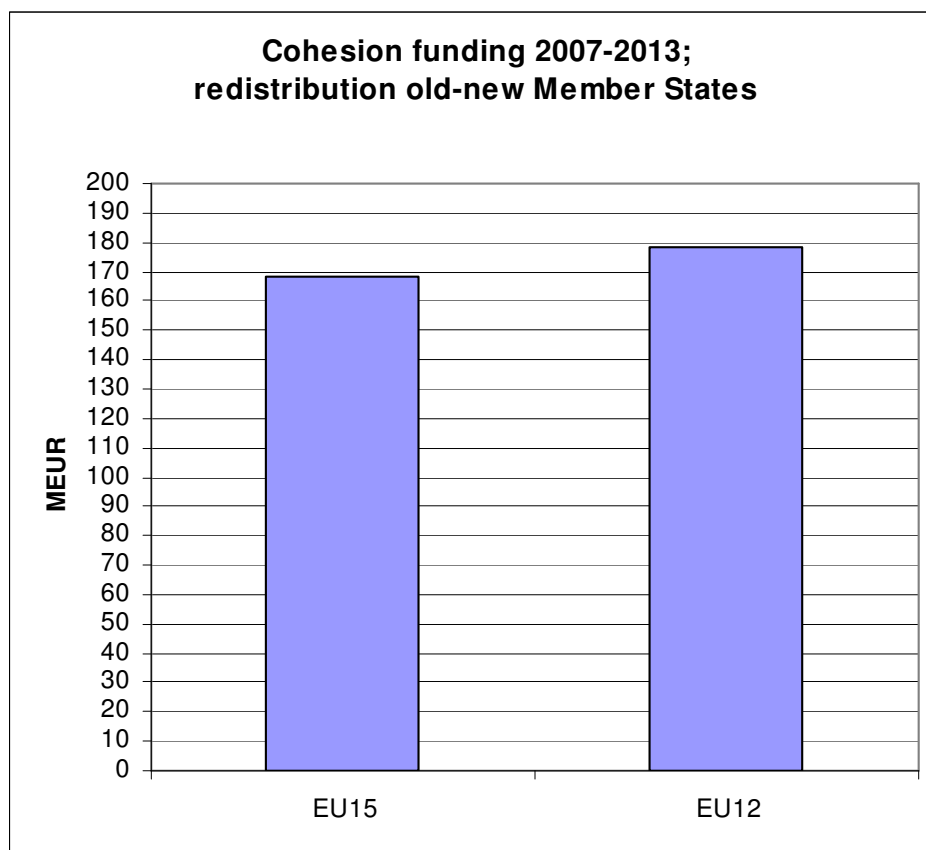
Bottom-up



MUNICIPAL LEVEL (342 MUNICIPALITIES)

THE MINISTRY OF EMPLOYMENT AND THE ECONOMY  
AND THE JOINT FINANCIAL COMMITTEE  
MINISTRY OF EMPLOYMENT AND THE ECONOMY

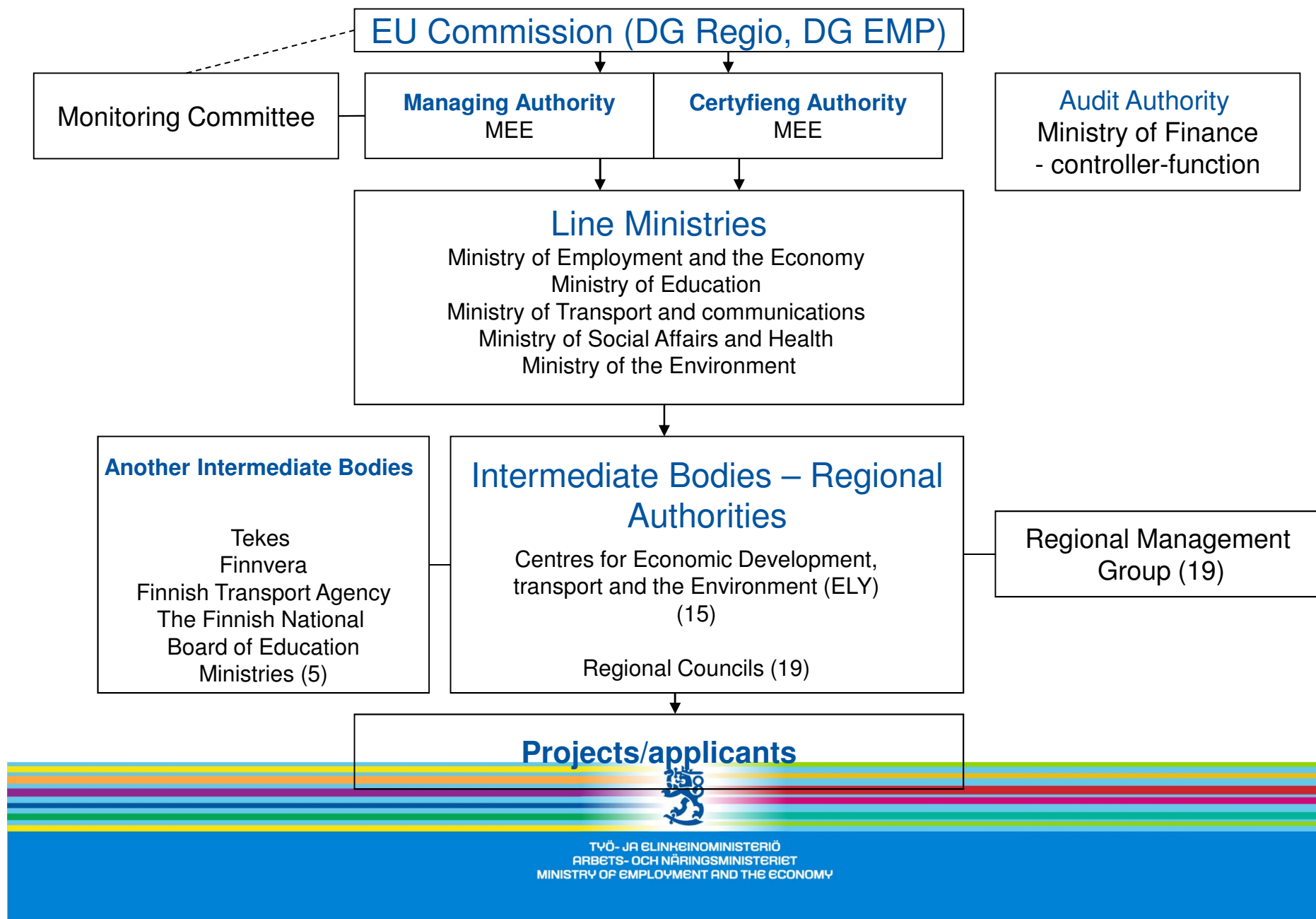
# Allocation of finance 2007-2013



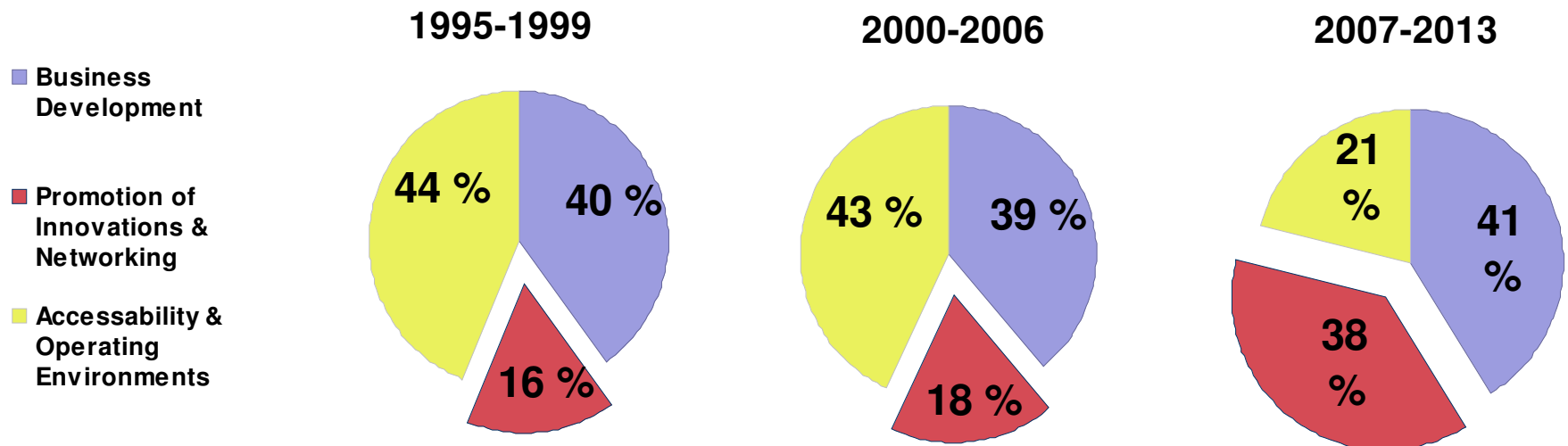
Member State	MEUR	%
Poland	67 284	19,44 %
Spain	35 217	10,18 %
Italy	28 812	8,32 %
Czech	26 692	7,71 %
Germany	26 340	7,61 %
Hungary	25 307	7,31 %
Portugal	21 511	6,22 %
Greece	20 420	5,90 %
Romania	19 668	5,68 %
France	14 319	4,14 %
Slovakia	11 588	3,35 %
United Kingdom	10 613	3,07 %
Lithuania	6 885	1,99 %
Bulgaria	6 853	1,98 %
Latvia	4 620	1,34 %
Slovenia	4 205	1,22 %
Estonia	3 456	1,00 %
Belgium	2 258	0,65 %
Netherlands	1 907	0,55 %
Sweden	1 891	0,55 %
<b>Finland</b>	<b>1 716</b>	<b>0,50 %</b>
Austria	1 461	0,42 %
Ireland	901	0,26 %
Malta	855	0,25 %
Cyprus	640	0,18 %
Denmark	613	0,18 %
Luxembourg	65	0,02 %
<b>Total</b>	<b>346 098</b>	<b>100,00 %</b>



# Management system (ESF/ERDF OP's)



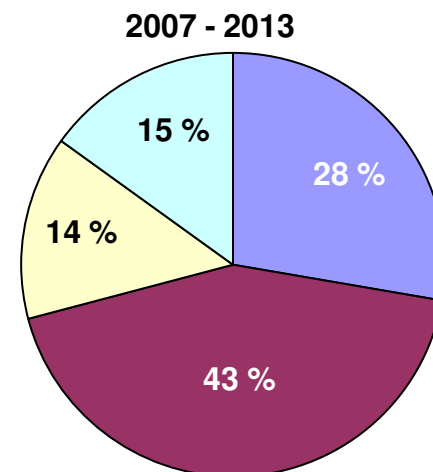
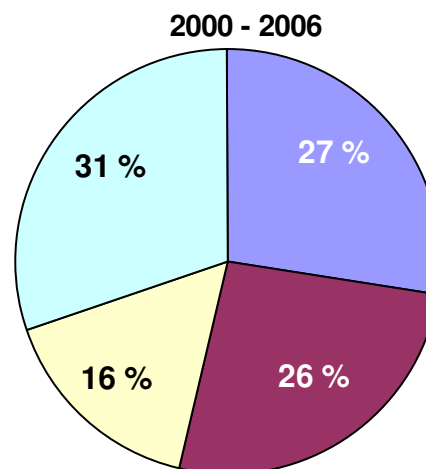
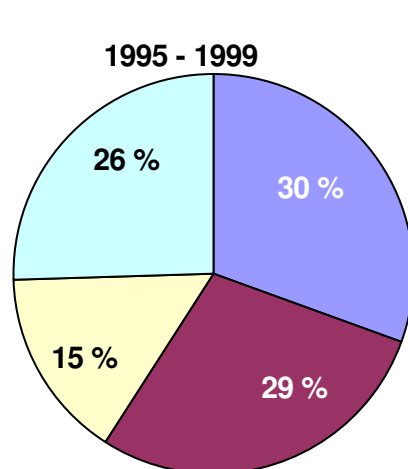
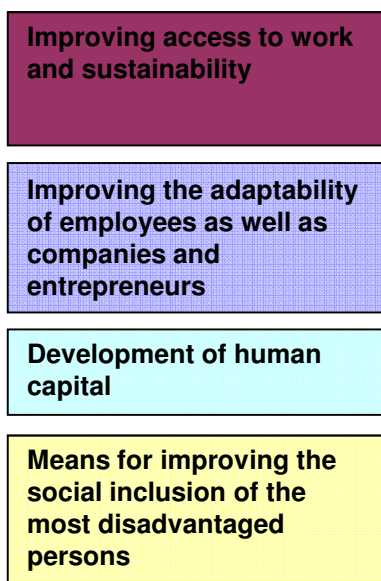
# ERDF Funding per Priority Axis During Different Programming Periods \*



\*) Including programming periods 1995-99 and 2000-2006 and their ERDF measures



# Allocation of ESF funding during different programming periods according to categorisation of 2007 – 2013 programme



# EU cohesion policy - significant substance impacts

- Innovation and R & D, possibility to start also risky projects
- Tourism business growth in particular in North Finland
- Expertise clusters – developing specific fields of know-how in different regions
- Compensatory job creation in economic structural changes
- Leverage in entrepreneurship combining developing projects and investments
- Preventive and proactive labour policy actions
- Productization of expert services for enterprises, business start up centres
- Work shops for young people and labour service centres (preventing exclusion)



# Expertise clusters

- Development of specific fields of know-how in different regions
- An example: The Centre of Expertise Programme ("OSKE") is implemented by 21 centres of expertise and three affiliate members
- improved co-operation between universities, universities of applied sciences and local enterprises
- improving the role of Universities of applied sciences as an important local partner and motor for regional development



# Competence Clusters and the Centres of Expertise

